



DIMMERS

ENERLITES dimmers can add lighting control flexibility to individual or multiple spaces. They allow users to adjust lighting levels to meet their individual needs in residences, offices, schools, hotels, stores, restaurants and other types of facilities. ENERLITES offer a variety of dimming control options for single gang boxes, single and three way decorator style slide dimmers, touch plate dimmers or our basic rotary style dimmers. ENERLITES dimmers are designed to increase or decrease lighting levels smoothly throughout the range of the dimmer. All dimmers are designed to be used in residential or commercial applications.

C

DIMMERS

| | |
|-------------------------|----|
| Slide Dimmers | C3 |
| Rotary Dimmers | C4 |
| Touch Dimmers | C5 |
| Decorator Dimmers | C6 |



C-1



Dimmers

ENERLITES Dimmers optimize system task lighting in residential and commercial environments. A wide range of incandescent, fluorescent and magnetic low-voltage dimming control products are available from ENERLITES. These products offer personal point of control and allow the users to create the perfect ambience.

ENERLITES wall box mounted dimmers come in a wide variety of models:

- Traditional Slide Dimmers
- Traditional Rotary Dimmers
- Elegant Touch Dimmers

In addition to providing precise and dependable illumination settings, dimmers also help conserve energy wherever they are installed.

Dimmers reduce energy consumption by cycling lighting on and off rapidly, thus increasing bulb life. Dimming your lights by a quarter increases your savings by approximately 20 percent. Dimming your lights by half increases your savings by approximately 40 percent! Lamp life is also extended up to 20 times when it is dimmed by half its rated wattage.

ENERLITES Dimmers Save Energy (Verified 05 07 08 on Lorton website)

| Dimming The Lights | Saves Electricity | Makes Incandescent Bulbs Last Longer |
|--------------------|-------------------|--------------------------------------|
| 10% | 10% | 2 times longer |
| 25% | 20% | 4 times longer |
| 50% | 40% | 20 times longer |
| 75% | 60% | >20 times longer |

*Numbers are approximate

Dimmer Capacity Chart

| Dimmer Style | Dimmer Rating | No Sides Removed | 1 Side Removed | 2 Sides Removed |
|--------------|---------------|------------------|----------------|-----------------|
| Rotary | 600W | 600W max. | 500W max. | 400W max. |
| Slide | 700W | 700W max. | 700W max. | 700W max. |
| Touch | 600W | 600W max. | 600W max. | 600W max. |
| Decorator | 600W | 600W max. | 600W max. | 600W max. |



Slide Dimmers

Features:

- Tough impact-resistant thermoplastic housing
- Smooth-action slide control for easy precise operation
- Broad product offering to meet a wide variety of applications
- Provide single-pole (one-location) or three-way (multi-location) control when used with three-way switch
- Longer mounting strap increases wall board contact area, eliminating floating installations
- Full-range dimming, lighting fades up and down smoothly allowing your eyes to adjust to changing light levels
- Five year warranty

Testing & code compliance

- UL/CUL Listed
- ISO9001 Registered manufacturing facility



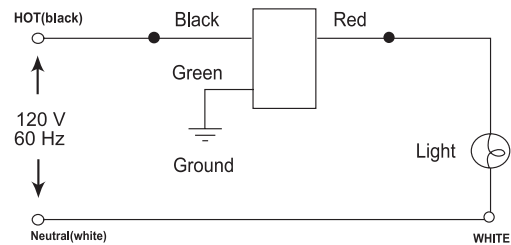
Rated at 120VAC, 60Hz unless otherwise noted

| DESCRIPTION | CAT. NO. | RATING | COLOR |
|---------------------------|----------|--------|------------------------------------|
| Single Pole | 50100 | 700W | Ivory, White, Almond, Light Almond |
| Three-Way | 50300 | 700W | Ivory, White, Almond, Light Almond |
| Single Pole, LED | 50101 | 700W | Ivory, White, Almond, Light Almond |
| Three-Way, LED | 50301 | 700W | Ivory, White, Almond, Light Almond |
| Single Pole, Switch | 50102 | 700W | Ivory, White, Almond, Light Almond |
| Three-Way, Switch | 50302 | 700W | Ivory, White, Almond, Light Almond |
| Single Pole, Switch & LED | 50121 | 700W | Ivory, White, Almond, Light Almond |
| Three-Way, Switch & LED | 50321 | 700W | Ivory, White, Almond, Light Almond |

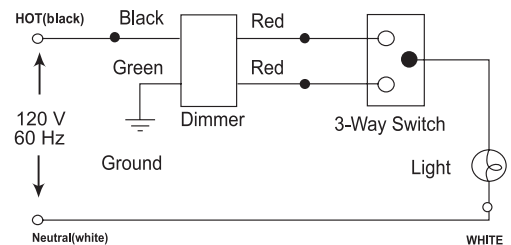


Wiring Diagram

Single-Pole wiring:



Three-way wiring:





Rotary Dimmers

Features:

- Easy push on/off operation
- Traditional Rotary style dimmer
- Wide variety of products to meet a wide range of applications
- Provide single pole, (one location), or three way, (multi location), control when used with three way switch
- Longer mounting strap to increase wall board contact area, thus eliminating floating installations

- Full-range dimming, lighting fades up and down smoothly allowing your eyes to adjust to changing light levels
- Five year warranty

Testing & code compliance

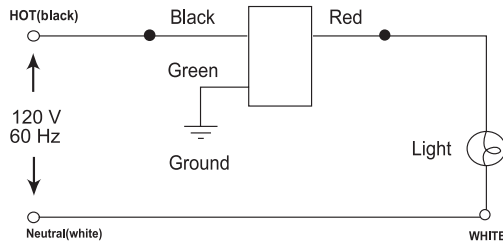
- UL/CUL Listed
- ISO9001 Registered manufacturing facility

Rated at 120V AC, 60Hz unless otherwise noted

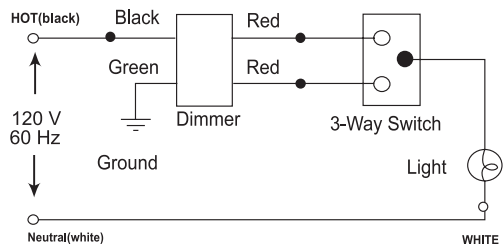
| DESCRIPTION | CAT. NO. | RATING | COLOR |
|------------------------------------|----------|--------|------------------------------------|
| Single Pole | 52100 | 600W | Ivory, White, Almond |
| Single Pole, Lighted | 52101 | 600W | Ivory, White, Almond |
| Single Pole, Push ON/OFF | 52103 | 600W | Ivory, White, Almond, Light Almond |
| Three-Way, Push ON/OFF | 52303 | 600W | Ivory, White, Almond, Light Almond |
| Single Pole, Push ON/OFF & Lighted | 52131 | 600W | Ivory, White, Almond |
| Three-Way, Push ON/OFF & Lighted | 52331 | 600W | Ivory, White, Almond, Light Almond |

Wiring Diagram

Single-Pole wiring:



Three-way wiring:



52100



52331



Touch Dimmers

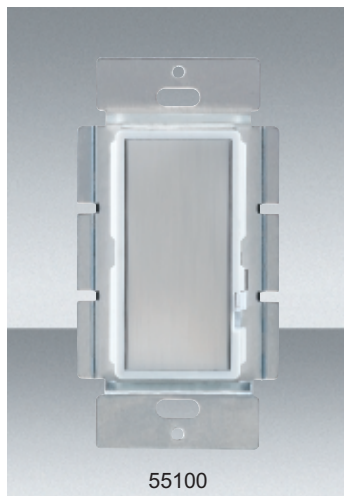
Features:

- Touch and hold for BRIGHT/DIM light control
- Brushed ivory, white, or almond touch plates
- Wide variety of products to meet a wide range of applications
- Provides fingertip ease of use and precise adjustment of lighting level
- Provide single-pole (one-location) or three-way (multi-location) control when used with three-way switch
- Simple touch control of switching and dimming functions- provides ergonomically simple control that requires no manual dexterity

- Touch dimmer stores previous light setting during off period-allows user to return to previous light setting when turning lights on without readjustment
- Five year warranty

Testing & code compliance

- UL/CUL Listed
- ISO9001 Registered manufacturing facility



55100

ENERLITES controls are rated at 120V AC, 60 Hz unless otherwise noted

| DESCRIPTION | CAT.NO. | RATING | COLOR |
|-------------|---------|--------|------------------------------------|
| Single Pole | 55100 | 600W | Ivory, White, Almond, Light Almond |
| Three-Way | 55200 | 600W | Ivory, White, Almond, Light Almond |

Touch Dimmers are technologically advanced and are combined with aesthetic decorative design in order to match interior styling needs. This dimmer provides the most advanced touch-technology with full range dimming effects available with this type of activation. A touch of the finger turns the device on and off when touched again. The touch plate ramps the lighting up and down the dimming range while holding ones finger on the touch plate.

Provides touch of a finger ease and precise adjustment of lighting levels within a space. Simple touch control of switches and dimming function provides ergonomically easy control that requires no manual skill. Touch dimmer can store previous set lighting levels in memory during off period, thus allowing the user to return to previous lighting level when turning the lights back on.



Decorator Dimmers

Features:

- Selected models available with LED
- Wide variety of products to meet a wide range of applications
- Fluid slide movement allows fine adjustment of lighting level with minimum effort
- Captured, wrap-around slide bar stays in place and cannot fall off during use
- Provide single-pole (one-location) or three-way (multi-location) control when used with three-way switch

- Full-range dimming, lighting fade up and down allows your eyes to smoothly adjust to changing light levels
- Five year warranty

Testing & code compliance

- UL/CUL Listed
- ISO9001 Registered manufacturing facility

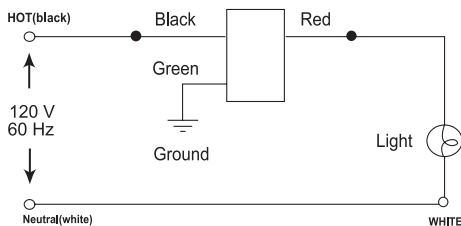
ENERLITES controls are rated at 120 VAC, 60 Hz unless otherwise noted

| DESCRIPTION | CAT. NO. | RATING | COLOR |
|--|----------|--------|------------------------------------|
| Fluorescent Single Pole, Switch | 56120 | 600VA | Ivory, White, Almond, Light Almond |
| Fluorescent Three-Way, Switch | 56320 | 600VA | Ivory, White, Almond, Light Almond |
| Fluorescent Single Pole, Switch & LED | 56121 | 600VA | Ivory, White, Almond, Light Almond |
| Fluorescent Three-Way, Switch & LED | 56321 | 600VA | Ivory, White, Almond, Light Almond |
| Incandescent Single Pole, Switch | 58120 | 600W | Ivory, White, Almond, Light Almond |
| Incandescent Three-Way, Switch | 58320 | 600W | Ivory, White, Almond, Light Almond |
| Incandescent Single Pole, Switch & LED | 58121 | 600W | Ivory, White, Almond, Light Almond |
| Incandescent Three-Way, Switch & LED | 58321 | 600W | Ivory, White, Almond, Light Almond |

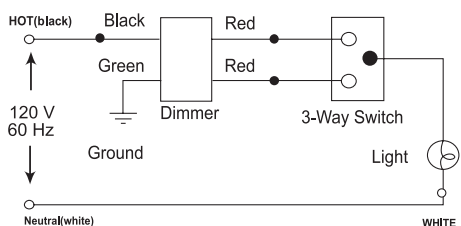


Wiring Diagram

Single-Pole wiring:



Three-way wiring:



Models available:

Incandescent
Lighting that uses a standard line voltage light bulb.

Fluorescent